

31000 dwt clean product carriers

m.t. **Fossarina**

m.t. **Fossarus**

m.t. **Fulgur**





These tankers are capable of carrying and segregating white products and some non-classified chemicals.

Cargo is carried in centre and wing tanks which are all coated with new epoxy paint systems.

The vessels are fitted with comprehensive cargo pipeline systems which allow several combinations of tanks to carry up to 4 non-compatible grades.

### Principal Particulars

Summer dwt:	32320 tonnes
Summer draft:	11.37metres (37ft. 4ins.)
Length overall:	170.69metres (560ft. 0in.)
Beam (extreme):	25.94metres (85ft. 1ins.).
Depth (moulded):	15.29metres (50ft. 2ins.)
Height (overall):	48.24metres (158ft. 3ins.) Keel to highest fixed point.

### Year Built & Classification

Year:	1976
Classification:	Lloyds + 100 A1 oil carrier UMS + LMC part (c.c.)

### Tonnages

Gross Registered Tonnes:	19275
Net Registered Tonnes:	12723
Suez Net Tonnes:	15836
Panama Net Tonnes:	16360
Lightship:	7700 Tonnes

### Cargo Carriage Features

Total Capacity 98%:	All cargo tanks. 42444 cubic metres. (266,965 US Barrels)
Number of Grades:	4
Inert Gas System:	N/A
Cargo Heating:	N/A
Tank Coating System:	Epoxy
Cargo Pumps:	4 centrifugal, self priming pumps, sited in a pumproom aft. Capacity 900 m3/hr. per pump. 2 vertical screw stripping pumps each 110 m3/hr.



## Tank Plan (not to scale)

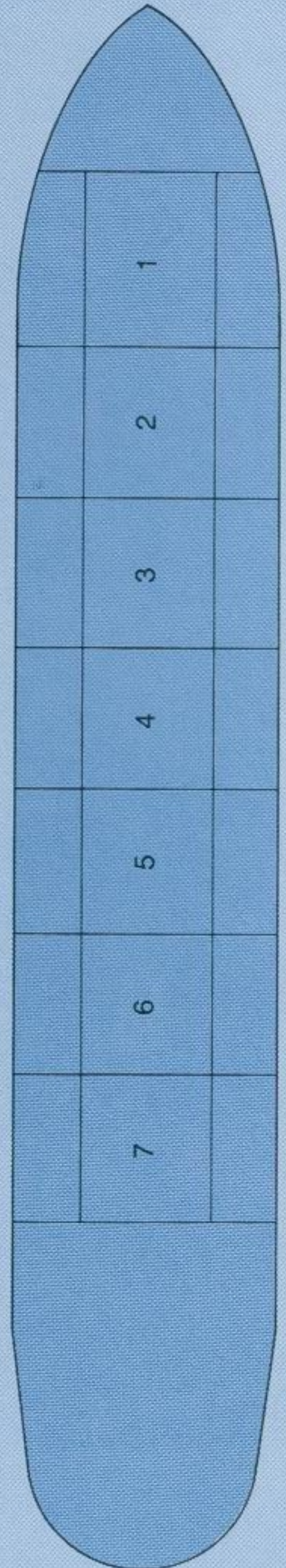
### Cargo Tank Capacities

Tanks	Cu. metres 98%.
No.1C	3490
No.2C	2962
No.3C	3022
No.4C	3022
No.5C	3022
No.6C	3022
No.7C	3279
No.1Ws	2661
No.2Ws	2823
No.3Ws	2919
No.4Ws	2922
No.5Ws	2924
No.6Ws	2913
No.7Ws	3463
Total	42444

### Deadweight Scale (Approximate figures)

Draft (Metres)	DWT(tonnes)	Displacement(tonnes)	TPC
summer	32230	39930	38.7
11	30791	38491	38.5
10	26966	34666	38.0
9	23200	30900	37.4
8	19490	27190	36.8
7	15837	23537	36.3
6	12230	19930	35.8
5	8666	16366	35.4

Freshwater allowance 260mm





## Manifold Connections

Number and Size:	4 x 14"
Type of Flange:	Carbon steel Bs 1560
Reducers, Number and Sizes:	8 x 14"-16", 4 x 14"-12", 4 x 14"-10", 4 x 14"-8" plus others
Bow to Centre of Manifolds:	88.1m (289ft 1 in.)
Approximate Height Above Waterline:	on SWDT draft 5.5m on Lightship draft 12.3m

## Ballast Arrangements

Total Capacity of Ballast Tanks:	N/A
Location & Type:	N/A
Ballast Pumps:	N/A

## Mooring Equipment

Number & Location of Winches:	3 forecastle, 1 maindeck forward, 1 maindeck aft and 3 on the poop.
Brake Capacity:	50 tonne
Moorings:	2 x 270m x 62mm, 8 x 220m x 62mm, 4 x 180m x 64mm ropes.
Length of Anchor Cable:	11 shackles port and starboard.
Number & Type of Bowstopper:	Smit type towing bracket with panama fairlead.

## Cranes/Derricks

Hose Handling:	1 x 10 tonne crane
Stores Handling:	1 x 5 tonnes gantry crane

Particulars believed to be correct but not guaranteed.





FOSSARINA